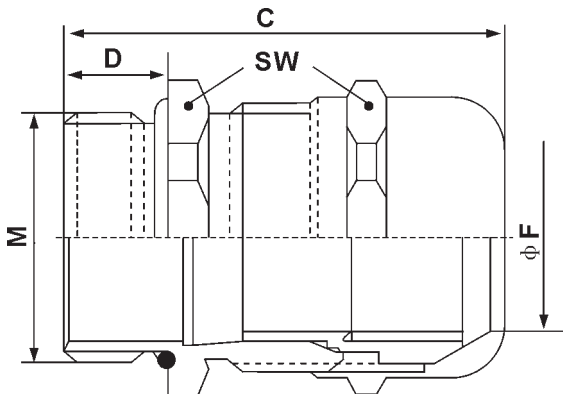


## Metric connection thread

### DASCM

This product is intended for a wide range of applications where stability and safety is required. Examples would be manufacturing machinery, electronic equipments, medical equipments, and controlling devices.



Technical Data	Temperature range	Protection class	Material
DASCM	-30°C to +100°C	IP 68-5 bar	Body : Nickel-plated brass Insert : Polyamide Sealing Ring : Neoprene O-ring : Perbunan

Seal hole	Threaded Entry Metric	Cat. No	Thread O.D. M	Thread Length D	Clamping Rang mm	Wrench Size mm	C mm
	M12×1.5	DASCMNN -12	12	6.5	3-7	16	27.3
	M16×1.5	DASCMNN -16	16	7	4.5-10	20	32
	M20×1.5	DASCMNN -20	20	8	7-13	24	35.5
	M25×1.5	DASCMNN -25	25	8	9-17	29	37.5
	M32×1.5	DASCMNN -32	32	9	11-21	36	42.2
	M40×1.5	DASCMNN -40	40	9	19-28	45	49.5
	M50×1.5	DASCMNN -50	50	10	27-35	54	52
M63×1.5	DASCMNN -63	63	15	34-45	67	61.3	

Seal hole	Threaded Entry Metric	Cat. No	Cable Range φ	Thread O.D. M	Thread Length D	Clamping Rang mm	Wrench Size mm	C mm
	M12×1.5	DASCMY2D -12	3 - 1.2	12	6.5	3-7	16	27.3
	M16×1.5	DASCMY2D -16	4 - 1.6	16	7	4.5-10	20	32
	M20×1.5	DASCMY2D -20	3.5 - 2	20	8	7-13	24	35.5
	M25×1.5	DASCMY2D -25	5 - 2	25	8	9-17	29	37.5
	M32×1.5	DASCMY2D -32	10 - 5	32	9	11-21	36	42.2
	M40×1.5	DASCMY2D -40	15 - 9	40	9	19-28	45	49.5
	M50×1.5	DASCMY2D -50	18 - 14	50	10	27-35	54	52
M63×1.5	DASCMY2D -63	23 - 17	63	15	34-45	67	61.3	

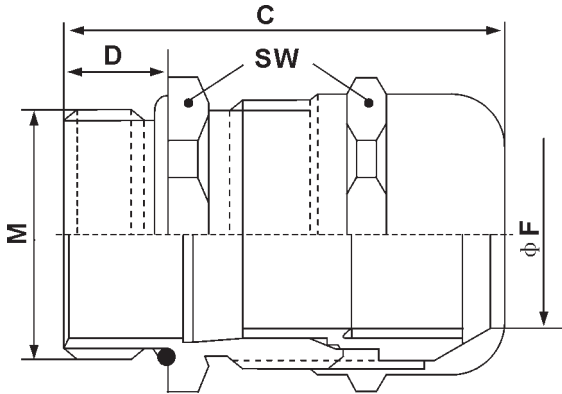
Seal hole	Threaded Entry Metric	Cat. No	Cable Range φ	Thread O.D. M	Thread Length D	Clamping Rang mm	Wrench Size mm	C mm
	M12×1.5	DASCMY3D -12	2.6 - 1.2	12	6.5	3-7	16	27.3
	M16×1.5	DASCMY3D -16	4 - 1.6	16	7	4.5-10	20	32
	M20×1.5	DASCMY3D -20	3.5 - 1.5	20	8	7-13	24	35.5
	M25×1.5	DASCMY3D -25	5 - 2	25	8	9-17	29	37.5
	M32×1.5	DASCMY3D -32	10 - 5	32	9	11-21	36	42.2
	M40×1.5	DASCMY3D -40	12.5 - 8	40	9	19-28	45	49.5
	M50×1.5	DASCMY3D -50	16-12	50	10	27-35	54	52
M63×1.5	DASCMY3D -63	19 - 15	63	15	34-45	67	61.3	

# Brass cable glands

## Metric connection thread

### DASCM

This product is intended for a wide range of applications where stability and safety is required. Examples would be manufacturing machinery, electronic equipments, medical equipments, and controlling devices.



Technical Data	Temperature range	Protection class	Material
DASCM	-30°C to +100°C	IP 68-5 bar	Body : Nickel-plated brass Insert : Polyamide Sealing Ring : Neoprene O-ring : Perbunan

Seal hole	Threaded Entry Metric	Cat. No	Cable Range $\phi$	Thread O.D. M	Thread Length D	Clamping Rang mm	Wrench Size mm	C mm
	M12×1.5	DASCMY4D -12	2.3 - 1	12	6.5	3-7	16	27.3
	M16×1.5	DASCMY4D -16	3 - 1.2	16	7	4.5-10	20	32
	M20×1.5	DASCMY4D -20	3.5 - 1.5	20	8	7-13	24	35.5
	M25×1.5	DASCMY4D -25	5 - 2	25	8	9-17	29	37.5
	M32×1.5	DASCMY4D -32	9 - 4.5	32	9	11-21	36	42.2
	M40×1.5	DASCMY4D -40	12 - 7	40	9	19-28	45	49.5
	M50×1.5	DASCMY4D -50	15 - 12	50	10	27-35	54	52
M63×1.5	DASCMY4D -63	19 - 15	63	15	34-45	67	61.3	

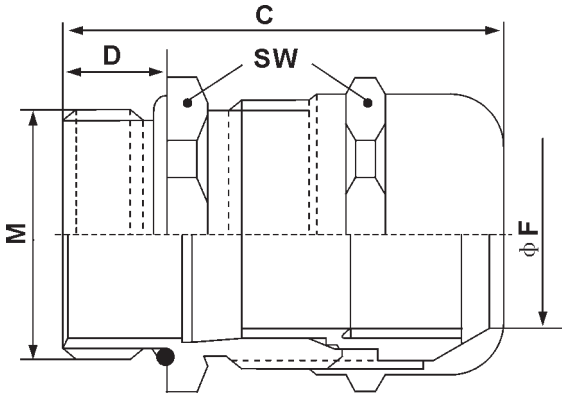
Seal hole	Threaded Entry Metric	Cat. No	Cable Range $\phi$	Thread O.D. M	Thread Length D	Clamping Rang mm	Wrench Size mm	C mm
	M12×1.5	DASCMY5D -12	2 - 1	12	6.5	3-7	16	27.3
	M16×1.5	DASCMY5D -16	2.5 - 1	16	7	4.5-10	20	32
	M20×1.5	DASCMY5D -20	3 - 1.2	20	8	7-13	24	35.5
	M25×1.5	DASCMY5D -25	3.5 - 1.5	25	8	9-17	29	37.5
	M32×1.5	DASCMY5D -32	8 - 3.5	32	9	11-21	36	42.2
	M40×1.5	DASCMY5D -40	11 - 6	40	9	19-28	45	49.5
	M50×1.5	DASCMY5D -50	13 - 10	50	10	27-35	54	52
M63×1.5	DASCMY5D -63	17 - 13	63	15	34-45	67	61.3	

Seal hole	Threaded Entry Metric	Cat. No	Cable Range $\phi$	Thread O.D. M	Thread Length D	Clamping Rang mm	Wrench Size mm	C mm
	M12×1.5	DASCMY6D -12	1.8 - 1	12	6.5	3-7	16	27.3
	M16×1.5	DASCMY6D -16	2 - 1	16	7	4.5-10	20	32
	M20×1.5	DASCMY6D -20	3 - 1.2	20	8	7-13	24	35.5
	M25×1.5	DASCMY6D -25	5.3 - 2.4	25	8	9-17	29	37.5
	M32×1.5	DASCMY6D -32	7 - 3.5	32	9	11-21	36	42.2
	M40×1.5	DASCMY6D -40	10 - 5	40	9	19-28	45	49.5
	M50×1.5	DASCMY6D -50	12 - 9	50	10	27-35	54	52
M63×1.5	DASCMY6D -63	15 - 11	63	15	34-45	67	61.3	

## Metric connection thread

### DASCM

This product is intended for a wide range of applications where stability and safety is required. Examples would be manufacturing machinery, electronic equipments, medical equipments, and controlling devices.



Technical Data	Temperature range	Protection class	Material
DASCM	-30°C to +100°C	IP 68-5 bar	Body : Nickel-plated brass Insert : Polyamide Sealing Ring : Neoprene O-ring : Perbunan

Seal hole	Threaded Entry Metric	Cat . No	Cable Range $\phi$	Thread O.D. M	Thread Length D	Clamping Rang mm	Wrench Size mm	C mm
	M12×1.5	DASCMY7D -12	2 - 1	12	6.5	3-7	16	27.3
	M16×1.5	DASCMY7D -16	2.4 - 1	16	7	4.5-10	20	32
	M20×1.5	DASCMY7D -20	3 - 1.2	20	8	7-13	24	35.5
	M25×1.5	DASCMY7D -25	3.5 - 1.5	25	8	9-17	29	37.5
	M32×1.5	DASCMY7D -32	6 - 3	32	9	11-21	36	42.2
	M40×1.5	DASCMY7D -40	7 - 4	40	9	19-28	45	49.5
	M50×1.5	DASCMY7D -50	8 - 5.4	50	10	27-35	54	52
M63×1.5	DASCMY7D -63	9 - 7	63	15	34-45	67	61.3	

Seal hole	Threaded Entry Metric	Cat . No	Cable Range $\phi$	Thread O.D. M	Thread Length D	Clamping Rang mm	Wrench Size mm	C mm
	M12×1.5	DASCMY8D -12	1.8 - 0.8	12	6.5	3-7	16	27.3
	M16×1.5	DASCMY8D -16	2 - 1	16	7	4.5-10	20	32
	M20×1.5	DASCMY8D -20	2.8 - 1	20	8	7-13	24	35.5
	M25×1.5	DASCMY8D -25	3.5 - 1.5	25	8	9-17	29	37.5
	M32×1.5	DASCMY8D -32	6 - 3.5	32	9	11-21	36	42.2
	M40×1.5	DASCMY8D -40	7 - 3.5	40	9	19-28	45	49.5
	M50×1.5	DASCMY8D -50	7.5 - 5	50	10	27-35	54	52
M63×1.5	DASCMY8D -63	8 - 6.5	63	15	34-45	67	61.3	

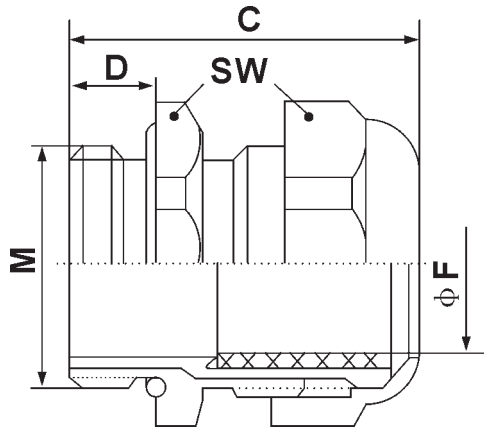
Seal hole	Threaded Entry Metric	Cat . No	Cable Range $\phi$	Thread O.D. M	Thread Length D	Clamping Rang mm	Wrench Size mm	C mm
	M12×1.5	DASCMLD -12	3 - 1.2	12	6.5	3-7	16	27.3
	M16×1.5	DASCMLD -16	4 - 1.5	16	7	4.5-10	20	32
	M20×1.5	DASCMLD -20	3.5 - 2	20	8	7-13	24	35.5
	M25×1.5	DASCMLD -25	4.5 - 2	25	8	9-17	29	37.5
	M32×1.5	DASCMLD -32	6 - 3.5	32	9	11-21	36	42.2
	M40×1.5	DASCMLD -40	9 - 4.5	40	9	19-28	45	49.5
	M50×1.5	DASCMLD -50	11 - 8	50	10	27-35	54	52
M63×1.5	DASCMLD -63	14 - 10	63	15	34-45	67	61.3	

# Brass cable glands

## Metric connection thread

### DRHCM

This product is intended for industrial connectors . It features metric connection thread , strain relief , high stability and safety ensured by a fixed plastic clamp .



Technical Data	Temperature range	Protection class	Material
DRHCM	-30°C to +100°C	IP 68-5 bar	Body : Nickel-plated brass Insert : Polyamide Sealing Ring : Neoprene O-ring : Perbunan

Seal hole	Threaded Entry Metric	Cat . No	Thread O.D. mm	Thread Length D	Spanner Size A & F	Clamping Rang mm	Wrench Size mm	C mm
	M25×1.5	DRHCMNN - 25	25	12	32/32	11-18	30	12
	M32×1.5	DRHCMNN - 32	32	12.5	41/41	16-25	40	12.5

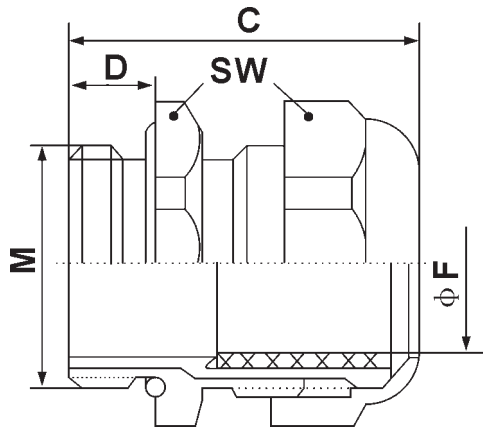
Seal hole	Threaded Entry Metric	Cat . No	Cable Range $\phi$	Thread O.D. mm	Thread Length D	Spanner Size A & F	Clamping Rang mm	Wrench Size mm	C mm
	M25×1.5	DRHCMY2D- 25	5-2	25	12	32/32	11-18	30	12
	M32×1.5	DRHCMY2D-32	10-5	32	12.5	41/41	16-25	40	12.5

Seal hole	Threaded Entry Metric	Cat . No	Cable Range $\phi$	Thread O.D. mm	Thread Length D	Spanner Size A & F	Clamping Rang mm	Wrench Size mm	C mm
	M25×1.5	DRHCMY3D - 25	5-2	25	12	32/32	11-18	30	12
	M32×1.5	DRHCMY3D - 32	10-5	32	12.5	41/41	16-25	40	12.5

## Metric connection thread

### DRHCM

This product is intended for industrial connectors . It features metric connection thread , strain relief , high stability and safety ensured by a fixed plastic clamp .



Technical Data	Temperature range	Protection class	Material
DRHCM	-30°C to +100°C	IP 68-5 bar	Body : Nickel-plated brass Insert : Polyamide Sealing Ring : Neoprene O-ring : Perbunan

Seal hole	Threaded Entry Metric	Cat . No	Cable Range $\phi$	Thread O.D. mm	Thread Length D	Spanner Size A & F	Clamping Rang mm	Wrench Size mm	C mm
	M25×1.5	DRHCMY4D- 25	5-2	25	12	32/32	11-18	30	12
	M32×1.5	DRHCMY4D- 32	9 - 4.5	32	12.5	41/41	16-25	40	12.5

Seal hole	Threaded Entry Metric	Cat . No	Cable Range $\phi$	Thread O.D. mm	Thread Length D	Spanner Size A & F	Clamping Rang mm	Wrench Size mm	C mm
	M25×1.5	DRHCMY5D- 25	3.5 - 1.5	25	12	32/32	11-18	30	12
	M32×1.5	DRHCMY5D - 32	8 - 3.5	32	12.5	41/41	16-25	40	12.5

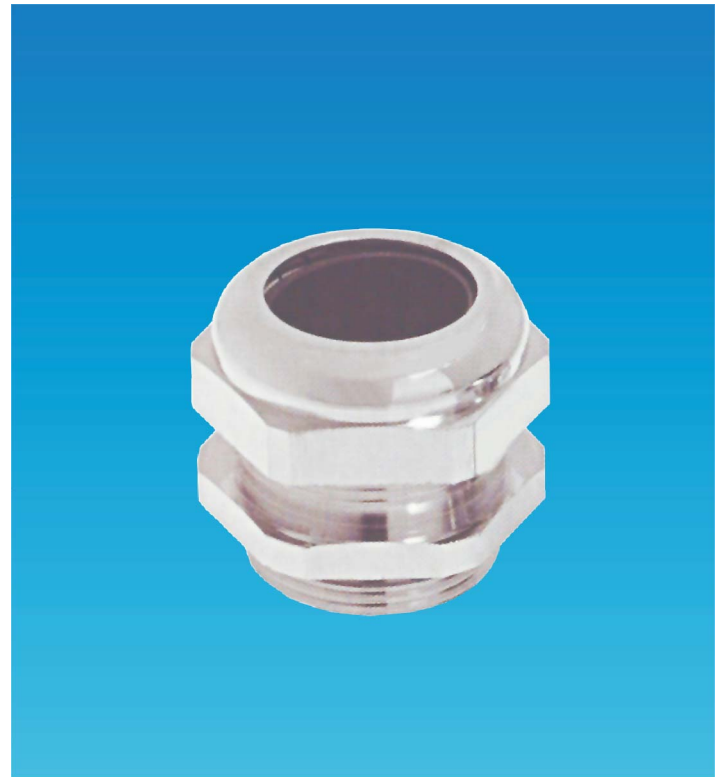
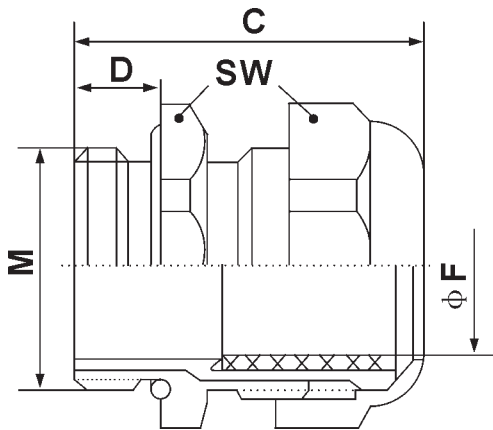
Seal hole	Threaded Entry Metric	Cat . No	Cable Range $\phi$	Thread O.D. mm	Thread Length D	Spanner Size A & F	Clamping Rang mm	Wrench Size mm	C mm
	M25×1.5	DRHCMY6D - 25	5.3 - 2.4	25	12	32/32	11-18	30	12
	M32×1.5	DRHCMY6D - 32	7 - 3.5	32	12.5	41/41	16-25	40	12.5

# Brass cable glands

## Metric connection thread

### DRHCM

This product is intended for industrial connectors . It features metric connection thread , strain relief , high stability and safety ensured by a fixed plastic clamp .



Technical Data	Temperature range	Protection class	Material
DRHCM	-30°C to +100°C	IP 68-5 bar	Body : Nickel-plated brass Insert : Polyamide Sealing Ring : Neoprene O-ring : Perbunan

Seal hole	Threaded Entry Metric	Cat . No	Cable Range $\phi$	Thread O.D. mm	Thread Length D	Spanner Size A & F	Clamping Rang mm	Wrench Size mm	C mm
	M25×1.5	DRHCMY7D-25	3.5 - 1.5	25	12	32/32	11-18	30	12
	M32×1.5	DRHCMY7D-32	6 - 3	32	12.5	41/41	16-25	40	12.5

Seal hole	Threaded Entry Metric	Cat . No	Cable Range $\phi$	Thread O.D. mm	Thread Length D	Spanner Size A & F	Clamping Rang mm	Wrench Size mm	C mm
	M25×1.5	DRHCMY8D-25	3.5 - 1.5	25	12	32/32	11-18	30	12
	M32×1.5	DRHCMY8D-32	6 - 3.5	32	12.5	41/41	16-25	40	12.5

Seal hole	Threaded Entry Metric	Cat . No	Cable Range $\phi$	Thread O.D. mm	Thread Length D	Spanner Size A & F	Clamping Rang mm	Wrench Size mm	C mm
	M25×1.5	DRHCMYLD - 25	4.5 - 2	25	12	32/32	11-18	30	12
	M32×1.5	DRHCMYLD-32	6 - 3.5	32	12.5	41/41	16-25	40	12.5

# Brass cable glands

## Metric connection thread

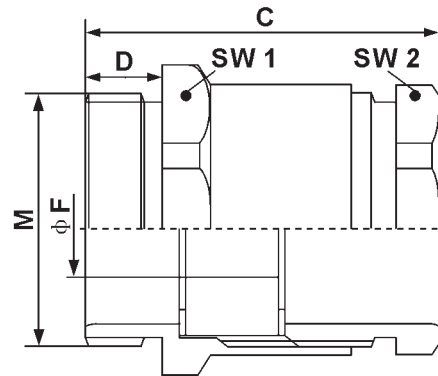
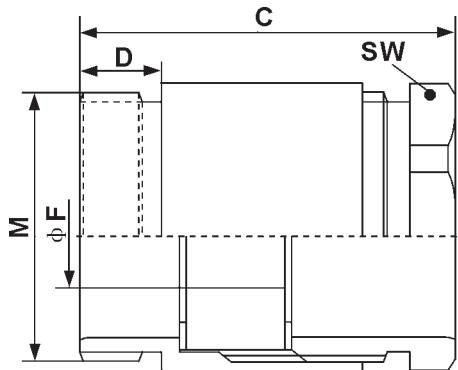
### RASCM

This gland is made from brass, featuring a round adapter. It is made up of five parts, including a two-part nickel-plated brass body, rubber sealing ring, and two metal washers.



### RBSCM

This gland is made from nickel-plated brass, featuring a hexagonal adapter. The hexagonal adapter makes assembly a breeze with a spanner.



Technical Data	Temperature range	Protection class	Material
RASCM RBSCM	-20°C to +80°C	IP 54	Body : Nickel plated brass Sealing ring : Soft rubber

Connection thread M	Cat. No	Connection inner thread PG	Thread O.D. M	Thread Length D	Connection inner diameter F mm	Wrench Size mm	C mm	PU pieces
M12×1.5	RASCMNN-12	7	12	5	5	13	20.6	100
M16×1.5	RASCMNN-16	9	16	5	7	15	21.6	100
M20×1.5	RASCMNN-20	11	20	6	9	18	23.6	50
M25×1.5	RASCMNN-25	21	25	7	16	28	29.6	50
M32×1.5	RASCMNN-32	29	32	8	25	37	32.6	50
M40×1.5	RASCMNN-40	36	40	8	34	47	37.6	20
M50×1.5	RASCMNN-50	42	50	9	38	54	42.6	5
M63×1.5	RASCMNN-63	48	63	10	42	60	45.1	5

Connection thread M	Cat. No	Cable range φ	Function thread PG	Thread O.D. M	Thread Length D	Width F mm	Wrench Size 1/2 mm	C mm
M12×1.5	RBSCMNN-12	7-3.5	7	12	5	5	14/13	20.6
M16×1.5	RBSCMNN-16	10-6	9	16	5	7	18/15	21.6
M20×1.5	RBSCMNN-20	14-8.5	11	20	6	10	22/18	23.6
M25×1.5	RBSCMNN-25	18-12.5	21	25	7	18	30/28	29.6
M32×1.5	RBSCMNN-32	25-18	29	32	8	27	40/37	32.6
M40×1.5	RBSCMNN-40	32.5-24	36	40	8	34	50/47	37.6
M50×1.5	RBSCMNN-50	41-30	42	50	9	40	57/54	42.6
M63×1.5	RBSCMNN-63	51-40	48	63	10	44	66/60	45.1

## ■ Metric connection thread

### ● RCSCM

This gland is made from nickel-plated brass, featuring a hexagonal adapter. It features a hexagonal adapter to aid the assembly, and a neoprene bushing formed from series of neoprene rings which allows this gland to accept a variety of cable sizes.

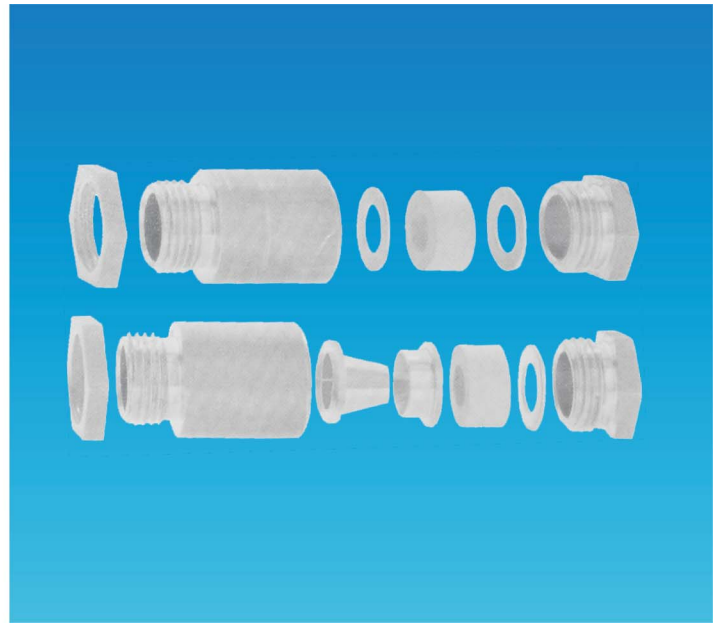
### ● RDSCM

RDSCM is a range of brass cable glands by DIN 89280 with round adapter.

Two types are available :

1, type "w" for unscreened cable.

2, type "z" for screened cable.



Technical Data	Temperature range	Protection class	Material
RCSCM	-20°C to +80°C	IP 54	Body : Nickel plated brass Sealing ring : Neoprene

Connection thread M	Cat. No	Cable range $\phi$	Outer thread PG	Thread O.D. M	Thread Length D	Inner diameter of the brush	Spanner Size 1/2 SW mm	C mm
M16×1.5	RCSCMNN-16	10-6	9	16	5	7.5/10	18/15	21.6
M20×1.5	RCSCMNN-20	14-8.5	11	20	6	7.5/10/12.5	22/18	22.6
M25×1.5	RCSCMNN-25	18-12.5	21	25	7	10/13/16/19	30/28	29.6
M32×1.5	RCSCMNN-32	25-18	29	32	8	18/21/24/27	39/37	32.6
M40×1.5	RCSCMNN-40	32.5-24	36	40	8	24/27/30/33	50/47	37.6
M50×1.5	RCSCMNN-50	41-30	42	50	9	30/33/36/39	57/54	42.6
M63×1.5	RCSCMNN-63	51-40	48	63	10	36/39/42/45	66/60	45.1

Cat. No.	Thread	Suitable for cable	SW mm
Type W			
RDSCMNN-18	M 18×1.5	7-8.5	19
RDSCMNN-24	M 24×1.5	7-8.5	24
RDSCMNN-30	M 30×2	16-18.5	30
RDSCMNN-45	M 45×2	26-28.5	46
RDSCMNN-56	M 56×2	32-35.5	55
RDSCMNN-72	M 72×2	41-44.5	70
RDSCMNN-80	M 80×2	56-59	85
RDSCMNN-105	M 105×2	68-73	104
Type Z			
RDSCMNN-18	M 18×1.5	7-8.5	19
RDSCMNN-24	M 24×1.5	7-8.5	24
RDSCMNN-30	M 30×2	16-18.5	30
RDSCMNN-36	M 36×2	20-22.5	36
RDSCMNN-45	M 45×2	26-28.5	46
RDSCMNN-56	M 56×2	32-35.5	55
RDSCMNN-72	M 72×2	41-44.5	70
RDSCMNN-80	M 80×2	56-59	85
RDSCMNN-105	M 105×2	68-73	104